



Erskine House 59 Davies Street,
Mayfair, W1K

£1,695 Per Week,

NAPIER WATT

T: 0207 935 0011

E: enquiries@napierwatt.co.uk

W: napierwatt.co.uk

35 Berkeley Square, Mayfair, London, W1J 5BF







Description

Sole Agents Napier Watt are delight to offer this stylish and contemporary duplex apartment located a stone's throw from Oxford Street and Bond Street Station.

This stylish property (1,238.00 sqft) comprises of 2 Large Bedrooms with 2 bathrooms and further cloakroom a large living area and separate kitchen. The flat also has access to the lovely communal garden at Erskine House.

Ideally Located in London's most desirable address - Mayfair, the property benefits from being less than 0.2 miles from Bond Street station and Oxford Street.

Westminster Council Tax Band F. EPC Rating E.

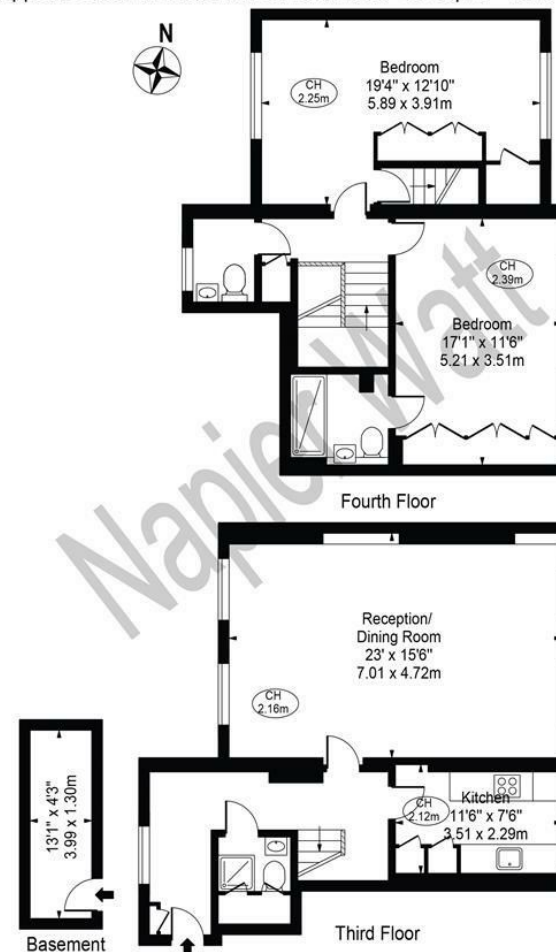
Key Features

- NEWLY REFURBISHED
- BOND STREET STATION
- OXFORD STREET
- LIFT
- FURNISHED
- COMMUNAL GARDEN

Terms

Fees & Charges: Tenancies exceeding £100,000 Per annum £480 inc VAT, Tenancies where a company is a tenant £480 Inc VAT.

Erskine House
 Approx. Gross Internal Area 1238 Sq Ft - 115.01 Sq M
 (Excluding Basement)
 Approx. Gross Internal Area Of Basement 56 Sq Ft - 5.19 Sq M



For Illustration Purposes Only - Not To Scale

This floor plan should be used as a general outline for guidance only and does not constitute in whole or in part an offer or contract. Any intending purchaser or lessee should satisfy themselves by inspection, searches, enquiries and full survey as to the correctness of each statement. Any areas, measurements or distances quoted are approximate and should not be used to value a property or be the basis of any sale or let.

IMPORTANT: We would inform prospective purchasers that these sales particulars have been prepared as a general guide only. A detailed survey has not been carried out, nor the services, appliances and fittings tested. Room sizes should not be relied upon for furnishing purposes and are approximate. If floor plans are included, they are for guidance only and illustration purposes only and may not be to scale. If there are any important matters likely to affect your decision to buy, please contact us before viewing the property.